



Michael Byrne Manufacturing Co, Inc.

MODEL H24-117 MICHAEL BYRNE EXTREME HEAVY DUTY HYDRAULIC HORIZONTAL EARTH BORING MACHINE



Michael Byrne Manufacturing offers the compact powerful H24-117, like all of our machines it is designed for the severest duty imaginable. This machine puts out 117,810 Lbs. of thrust and 8,021 Ft-Lbs. of torque. It also has a variable speed control for controlling speed of thrust and auger rotation. Base track is only 4 Ft long resulting in great savings of time and money during pit construction.

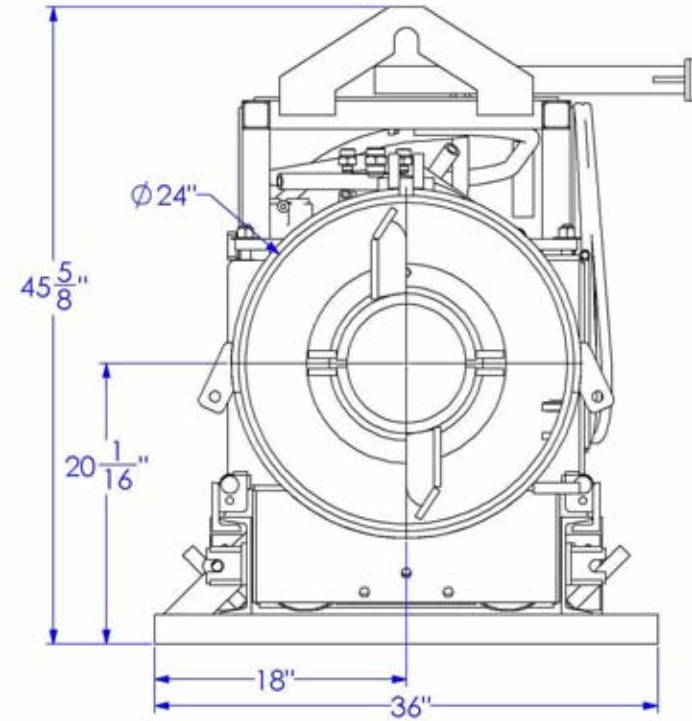
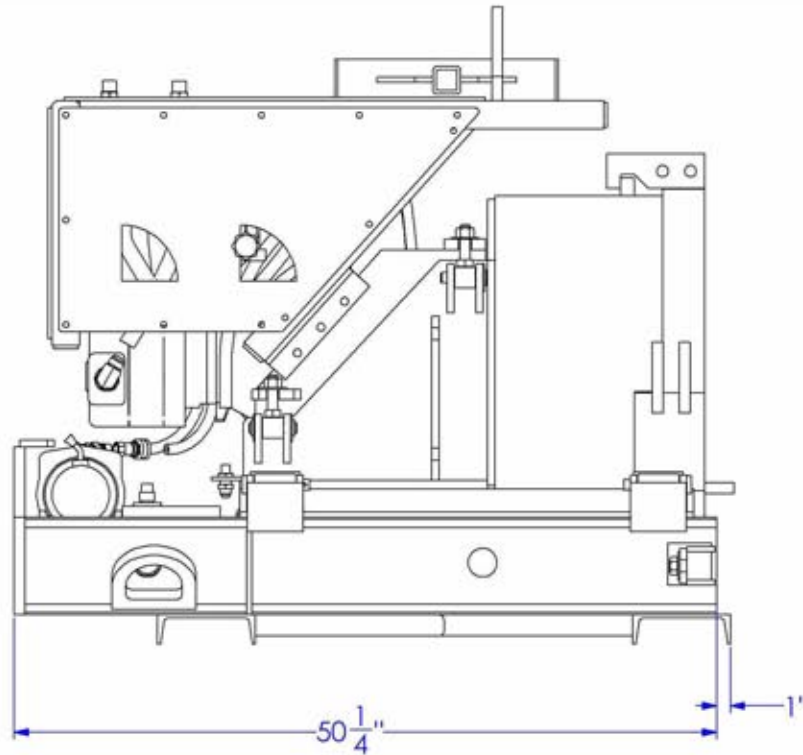
Our planetary gearbox is specifically designed for boring machines. Handling the severest shock loads, surpassing any of our competitor models. Also included to protect gearbox is a thrust-bearing package protecting the complete drive train. Also included is a winch to re-track machine from front of pit to rear. Push block is spring loaded for foot operation and easy return of push block pins.

The power unit supplies the boring unit with 40 GPM at 3,500 PSI to auger drive. And a second pump supplies 20 Gpm to thrust cylinders and winch. It is powered by a 125 Hp water-cooled diesel. Power unit is easily hooked up in just a few minutes with quick-disconnect lines and can be used for other hydraulic tools and equipment.

Our tracks are connected together by heavy duty quick-disconnect track connectors. Michael Byrne designed heavy box constructed frames, for severe conditions to keep proper alignment for successful bores. This machine is a split base design for easy lifting in and out of pits.

All machine gauges and warning lights are in operator's view of sight for easy operation.

MODEL H24-117 MICHAEL BYRNE EXTREME HEAVY DUTY HYDRAULIC HORIZONTAL EARTH BORING MACHINE



Power Train System: Engine: 125 HP Water Cooled Diesel @ 2400 Rpm

Fuel Capacity: 23 U.S. Gallons

Planetary Gearbox Ratio: 24.48 : 1

Auger Drive: 2 1/4" Hex

Working Range: 2" to 24" Earth Boring

Machine Torque and Speed Max: 0-53 RPM 8,021 Ft-Lbs (96,256 In-Lbs)

Dimension of Power Unit:

Length : 80"
Width : 48"
Height : 60"

Hydraulic System

Pressure 3,500 Psi Auger Drive / 3,000 Psi Thrust Cylinders
Pump Type Tandem Gear
Gallon per Minute 40 GPM Auger Drive / 20 Gpm Thrust Cylinders
Cylinders (2) 5" Bore x 27" Stroke
Max Thrust 117,810 Lbs

Return Filter Micron Replaceable Element

Heavy Duty Hydraulic Oil Cooler

Weights (Approx.)

Bottom Base Assembly 762 Lbs.
Top Base Assembly 1,142 Lbs.
Master Ring Assembly 261 Lbs.
Master Track 275 Lbs.

Dimensions

Centerline of Bore to Bottom of Track : 20.13"
Machine Height : 47"
Machine Width : 36"
Base Track Length : 50.25"