



**Make Boring
Great Again**



Michael Byrne Manufacturing

Mike Byrne, like many entrepreneurs of his generation, started the business in 1966 out of a garage in downtown Mansfield, Ohio. For over 55 years Michael Byrne Manufacturing has been a driving force in the trenchless industry with advances in technology, safety and innovative ideas derived directly from customer interaction. Our boring machines and underground tooling are industry recognized for their durability and ruggedness. We are the only auger boring manufacturer that integrates its own EXTREME DUTY gearbox designed for the demanding conditions of underground construction. MBM remains a family owned business that is proud to be the longest continuous manufacturer of auger boring machines in the United States.



D72/84-1.9



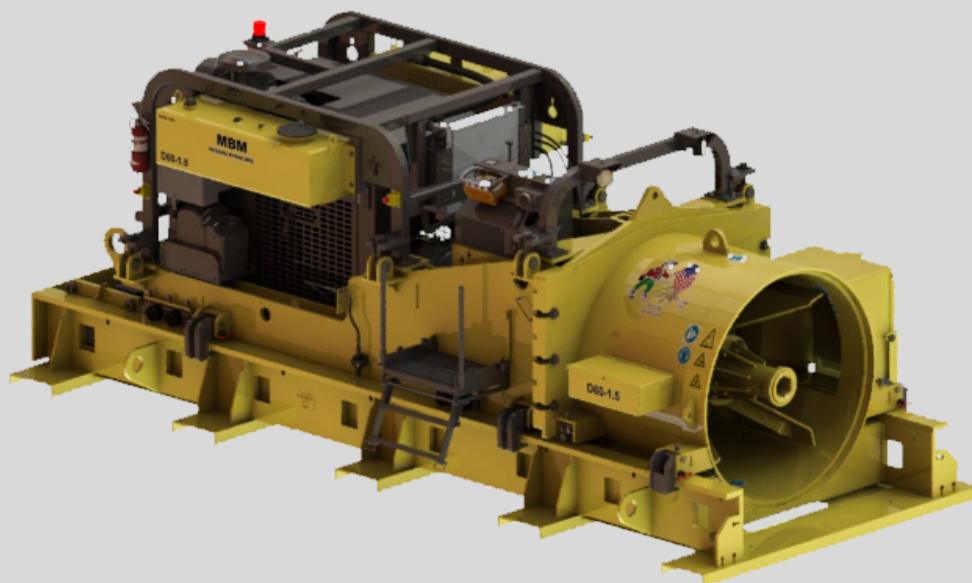
Are large, long diameter bores in your company's future? Don't get caught underpowered! The MBM D72/84-1.9 is in a class all its own with 350 HP, the MBM B-19 Gearbox, and high strength carbon steel frame and track providing all the power, push, and torque to turn those large augers.

Machine Specs

Machine	D72/84-1.9
Diameter	72" - 84"
Horsepower	350HP
Thrust	1,844,893 lbs
Max Torque	329,936 ft-lbs
Gear Box	Michael Byrne B16-B19
Operating Weight*	67,100 lbs

*operating weight includes 2 pc of extension tracks

D60/72-1.5



Looking to make a statement your customers won't forget? Impressive and powerful the D60/72-1.5 provides class leading power and performance for 60" machines. The 250 HP Tier 4 engine, and MBM B-16 Gearbox combined with high strength carbon steel frames and tracks won't disappoint you on the large diameter bores.

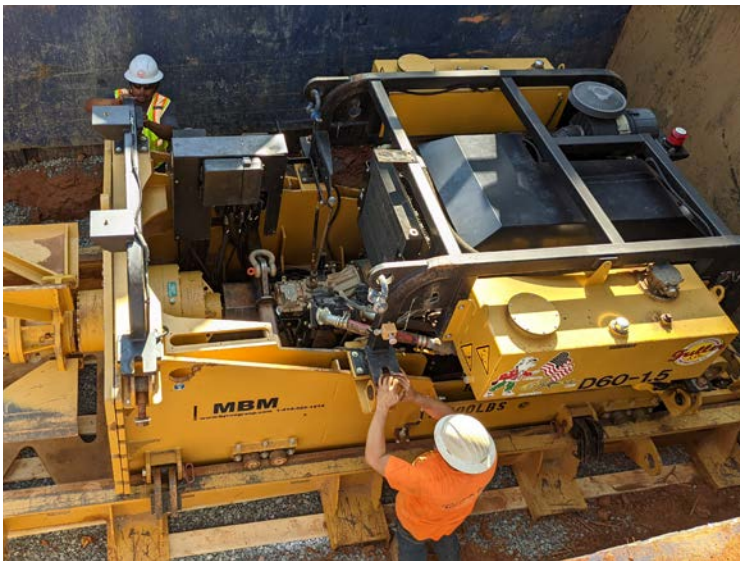
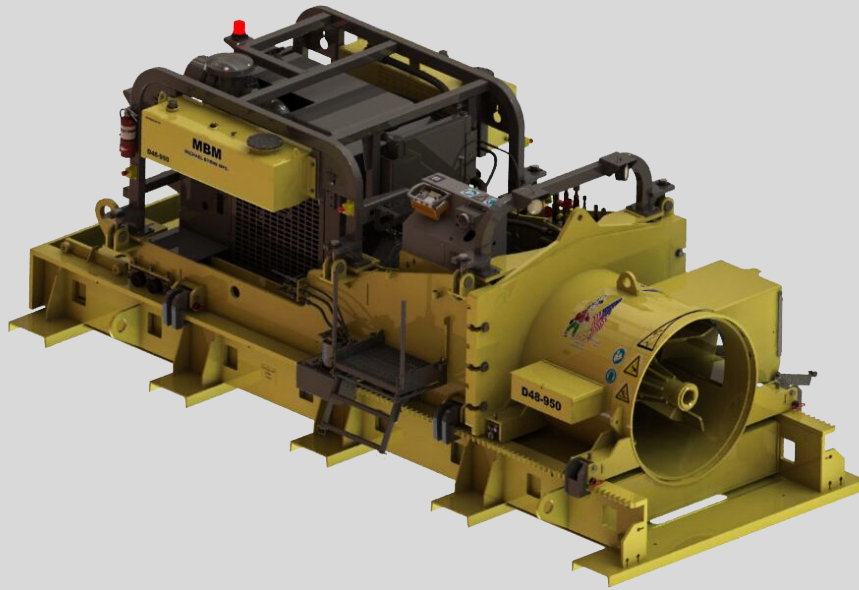
Machine Specs

Machine	D60/72-1.5
Diameter	60"- 72"
Horsepower	250HP
Thrust	1,475,914 lbs
Max Torque	252,277 ft-lbs
Gear Box	Michael Byrne B13-B16
Operating Weight*	55,470 lbs

*operating weight includes 2 pc of extension tracks



D48/60-1.1



This 48" machine is not your typical 48 with industry leading horsepower, thrust, and torque you can be confident on the longer, large diameter bores. This machine features a 185 HP Tier 4 engine, MBM B-13 gearbox and high-strength, carbon alloy steel frames and track. The D48/60 will keep you on-line, on-time and on-budget. The 48 can convert to a 60" machine with a simple lift kit.

Machine Specs

Machine	D48/60-1.1
Diameter	48"- 60"
Horsepower	185HP
Thrust	1,106,935 lbs
Max Torque	194,360 ft-lbs
Gear Box	Michael Byrne B13-B13
Operating Weight*	50,940 lbs

*operating weight includes 2 pc of extension tracks

D42/48-950

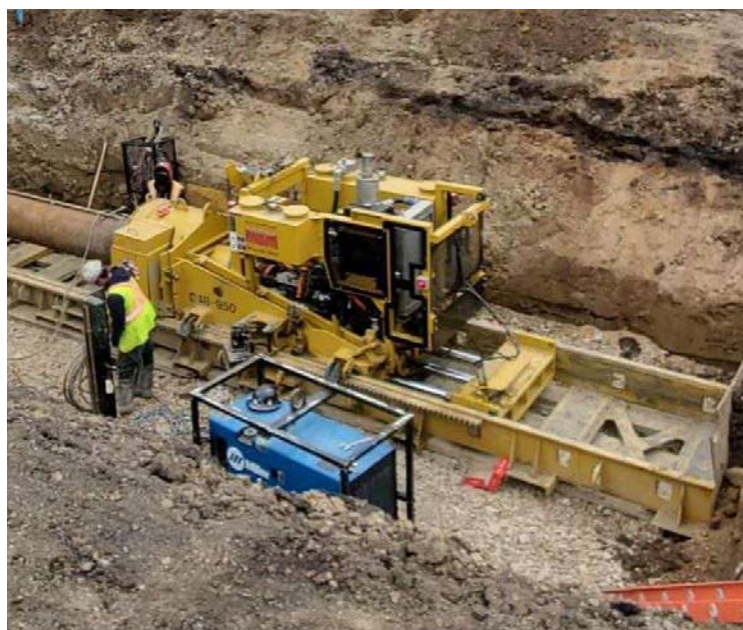
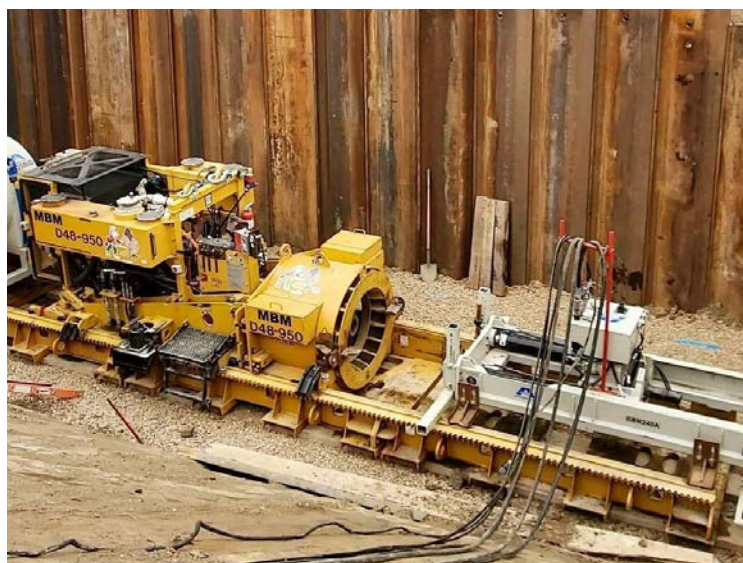


Need compact power for large diameter short to medium distance bores? The D42/48-950 provides the power to get your bore completed. The 140HP Tier 4 engine, S20 Fairfield gearbox, high strength carbon steel frame and tracks provide an economical boring machine with industry leading power, push, and torque.

Machine Specs

Machine	D42/48-950
Diameter	42"- 48"
Horsepower	140HP
Thrust	954,255 lbs
Max Torque	173,880 ft-lbs
Gear Box	Fairfield S20
Operating Weight*	33,215 lbs

*operating weight includes 2 pc of extension tracks



D36-500



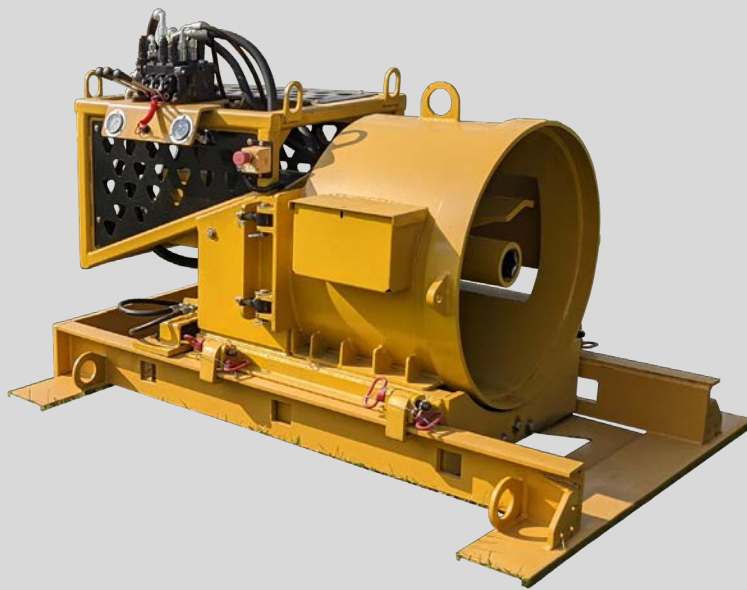
The D36-500 machine is the swiss army knife of auger boring machines. Powered to perform 36" bores in a compact, split/modular frame for convenient mobilization to job sites. The Tier 4 engine is the most powerful available without requiring DEF fluid. The 36-500 machine has historically been one of the most profitable machines in a contractor's fleet.

Machine Specs

Machine	D36-500
Diameter	36"
Horsepower	74HP
Thrust	461,820 lbs
Max Torque	83,060 ft-lbs
Gear Box	Fairfield S20
Operating Weight*	28,600 lbs

*operating weight includes 2 pc of extension tracks

H24/30



When space is a premium at your jobsite the H24/30 is the answer. The compact design is perfect for a small trench often required for urban settings, lateral installations, and short road bores. The hydraulic bore machine can be powered by the Michael Byrne 110 HP power unit or the auxiliary drive of many equipment manufacturers. Exhaust fumes are no longer an issue with the power pack out of the pit.

Machine Specs

Machine	H24/30
Diameter	24"- 30"
Horsepower	110 hp
Thrust	117,000 lbs
Max Torque	8.050 ft-lbs
Gear Box	Fairfield S7B7
Operating Weight*	2,712 lbs

*operating weight includes 2 pc of extension tracks



D42 - D72 Features

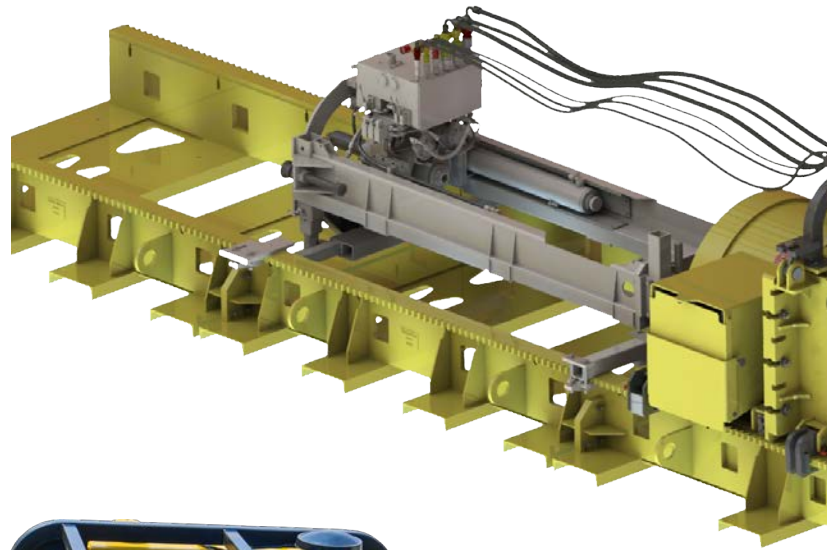


Standard Features

- Wireless or tethered remote-control operation
- Push block alignment indicator lights
- Locked in track indicator light
- Thrust "cruise control"
- Machine tilt safety switch
- Winch

Options

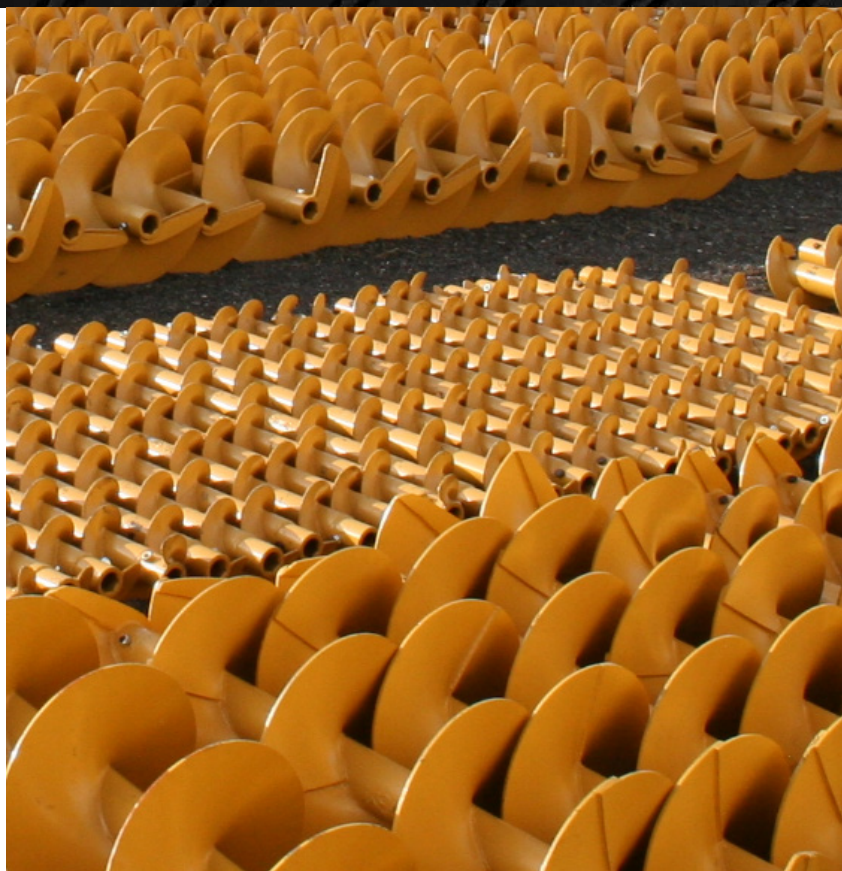
- Rack drive & brake system
- Akkerman GBM "ready" connections
- CE compliant



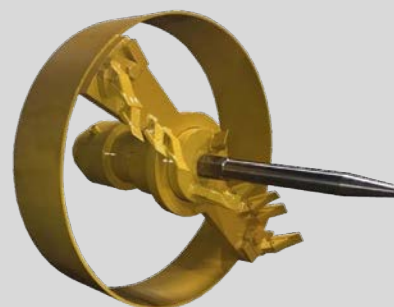
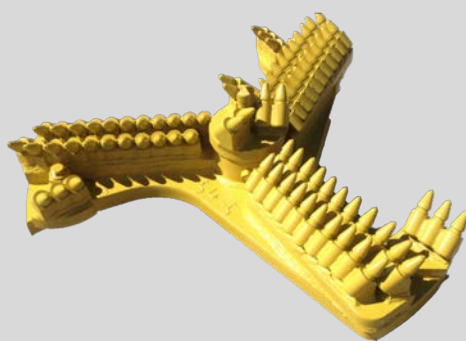
Accessories

Auger

- 8" to 84" Diameter Auger
- 2-1/4" to 5" Hex
- Standard HEAVY DUTY construction design with 1" wall tube

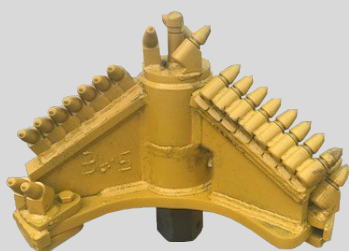


Cutting Heads & Adapters



Swivel head to follow pilot bore

Cutting heads for all material conditions from sand to hard rock



Build a custom cutting head for your job



Hex, casing and saddle adapters

HDD Parts & Service



- Specializing in large HDD Drill Parts
- Rebuild of Directional Drills
- Drill Pipe, Sub Savers and Cross Overs



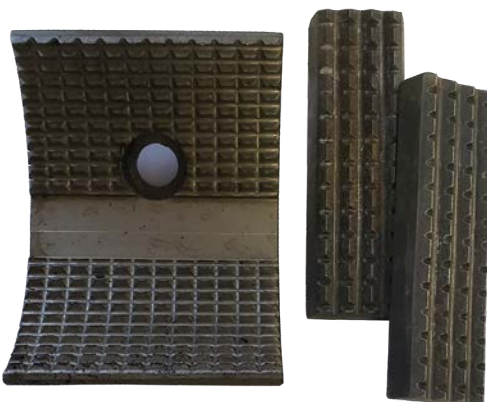
Custom
Pull Back
Reamers



Wrench Die
Holders



Complete Wrench Assemblies



Die Inserts



Mud Pump Parts

International Representatives



NKA Engineering Cyprus Ltd.

11 Agiou Georgiou
P.Code 2411,
Egkomi Nicosia - Cyprus

Tel: +35722875790
Fax: +35722875791
Email: nkaengineering@cytanet.com.cy



Novatech Service LLC

Russia

Alexander Kharitonov

General Manager

Office (Toll Free): 8 (800) 444 60 34
Cell: +7 911 282 00 44

Email: novatechservice@yandex.com
Website: www.novatechservice.com

Sub-Surface Equipment

Western Canada

Mike Shannon

President

Phone: (250) 558-9716
Email: subsurface@telus.net



Underground Construction Supply Mexico

Yuri Gagarin Lote 35 #36
Rancho Aereo, Tecamac
Edo de Mexico, 55770

Sergio Alvarado

CEO

Office : +52 (55) 5932 5444
Cell: +52 (55) 4416 6259

Email: sergio@ucsmexico.com
Website: www.ucsmexico.com



MORTEC Infrastructure & Recycling Equipment Ltd.

Kfar Blum, Israel

Arnon Mor

CEO

Office: +972 (0)8 9352707
Mobile: +972 (0)50 5770295

Kfar Blum, Israel

Email: arnonmor@mortec.co.il
Website: mortec.co.il



Michael Byrne Manufacturing
1855 Earth Boring Rd.
Mansfield, OH 44903

Phone: 419-525-1214 or 800-613-7206
Fax: 419-525-2386